



DEWATERING TRENCHER

UNEARTH THE POWER The Wolfe Dewatering Trencher features a chain with a maximum depth of 19ft [580cm] & cut width of 12" [30cm].

STATE-OF-THE-ART TECHNOLOGY AND COMFORT

MODERN CAB DESIGN

AIR RIDE SEAT

DIGITAL CLIMATE CONTROL

AUTO STEER READY - PLUG & PLAY INSTALLATION

ERGONOMIC MACHINE CONTROLS

3ft REMOVABLE BOOM SECTION

TELEMATICS (OPTION)

The Telematics option integrates with the Danfoss Plus+1® monitoring system, allowing Wolfe to remotely read codes and diagnose related issues. The telematics system is accessible virtually anywhere in the world.

OPTIMAL MACHINE COOLING

The machine cooling system is designed with variable speed reversing fans. The variable speed fans help reduce fuel consumption while the auto / manual reversing feature makes for easy cleaning when operating in dusty conditions.

UNDER HOOD ACCESSIBILITY

The hoods are designed with extra clearance when open for easy maintenance access to the engine and hydraulics.

OSCILLATING TRACKS (OPTION)

Both tracks move separately from one another ensuring optimal balance and traction while providing a smoother ride for the operator.

7° SIDE TILT (OPTION)

The side tilt feature automatically or manually keeps the boom vertical ensuring a precise grade on sloped terrain.

REEL CARRIER (OPTION)

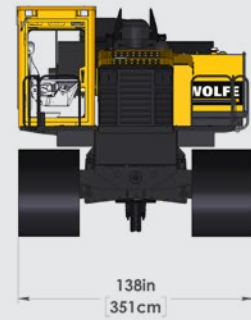
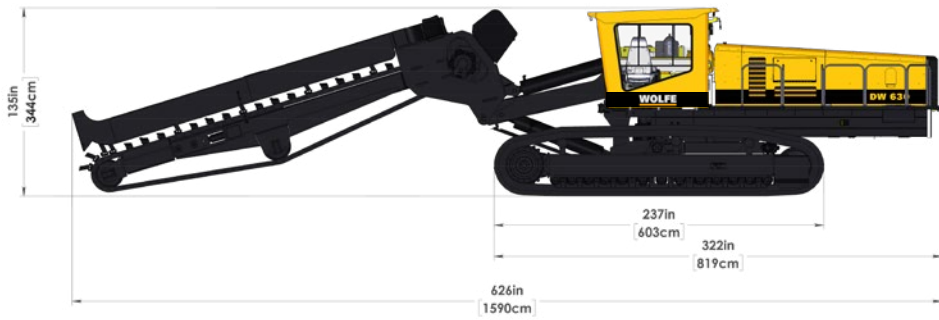
The compact design has the ability to be folded up for easy transportation and quick field-ready transitions.

CENTRAL LUBE STATION (OPTION)

Allows safer and easier greasing from central locations. An auto-lube feature is available to reduce manual maintenance while ensuring that all lube points are getting the proper amount of grease.

Wolfe Heavy Equipment is a powerful agricultural and commercial trenching manufacturer committed to providing superior engineering and expert service. Wolfe plows are proven to hold grade in even the toughest conditions. UNEARTH THE POWER.

WOLFE



STANDARD EQUIPMENT FEATURES

UNDER HOOD ACCESSIBILITY

630HP CAT™ C-18 ENGINE

AIR RIDE SEAT

GPS/AUTO STEER READY

ERGONOMIC MACHINE CONTROLS

Two-Speed Drive System

1st Max: 88 ft/min [1.6km/h]

2nd Max: 274 ft/min [5km/h]

C/W Programmable Dig Mode

Proportional Hydraulics

58 Link Tracks available with standard or extreme pads

GPS and Laser ready

Dual or Single Stick Track Control System

State-of-the-art Plus+1[®] Electronic Over Hydraulic Control System with complete machine monitoring, diagnostics and feedback to protect your machine for the long term

A/C and Heated cabs C/W digital climate control

Side mounted cabs to increase the visibility of the work zone and sight line while driving

Engine cooling system with auto/manual reversing fans for cleaning during operation in dusty conditions

Highest ground clearance in the industry

Built-in air compressor

Digging Boom capable of depths from 11ft to 19ft

C/W 3ft Removable Boom Section

Machine Weight:
Approx. 86,000lbs [39, 280kg]

Auto Idle

Engine Block Heater

OPTIONAL EQUIPMENT ADD-ONS

COMPACT REEL CARRIER

OSCILLATING TRACK

7° TILT FRAME C/W AUTO SENSING

AUTO/MANUAL LUBE MANIFOLD

CUSTOM COLOURS AVAILABLE

Extended Grouser Bars

Hydraulic Oil Pre-Heater

Optional Shoe Widths

Cable Tow System

Cameras and View Monitors

Lights

Telematics

GPS and Laser Systems

Carbide Cutting Teeth

